

1.50mm .059" Center Wire to Board Connector



1503 Series

■ WAFER

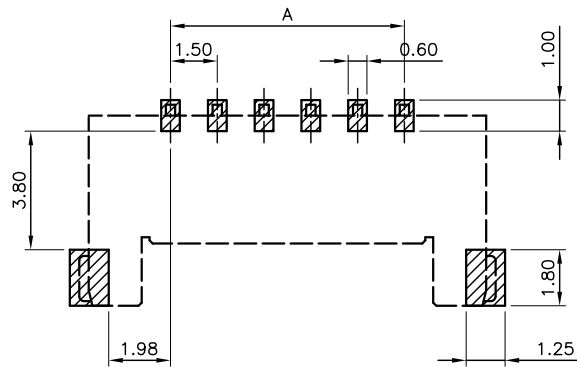
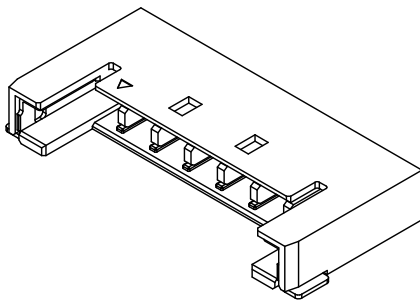
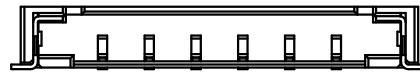
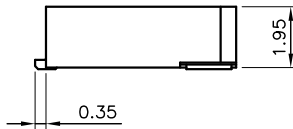
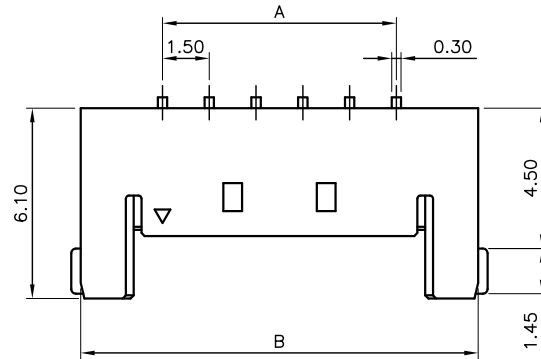
- Part No.: 1503-SMTR-xxP

Specifications

- Electrical
- Voltage Rating: 150V AC, DC
- Current Rating: 3A
- Withstanding Voltage: 500V AC/ minute.
- Insulation Resistance: 1000MΩ Min
- Mates with: 1503-H-xxP

Material

- Circuits: 2~12
- Housing: PA4T, UL 94V-0
- Pin: Phosphor bronze, Gold plated
- Solder tab: Brass, Tin plated
- Temperature Range: -25~+85°C



PCB PATTREN LAYOUT

Ordering Information and Dimensions

CIRCUITS	PART NO.	DIMENSION	
		A	B
2	1503-SMTR-02P	1.50	6.75
3	1503-SMTR-03P	3.00	8.25
4	1503-SMTR-04P	4.50	9.75
5	1503-SMTR-05P	6.00	11.25
6	1503-SMTR-06P	7.50	12.75

CIRCUITS	PART NO.	DIMENSION	
		A	B
8	1503-SMTR-08P	10.50	15.75
10	1503-SMTR-10P	13.50	18.75
12	1503-SMTR-12P	16.50	21.75