

# 1.50mm .059" Center Wire to Board Connector

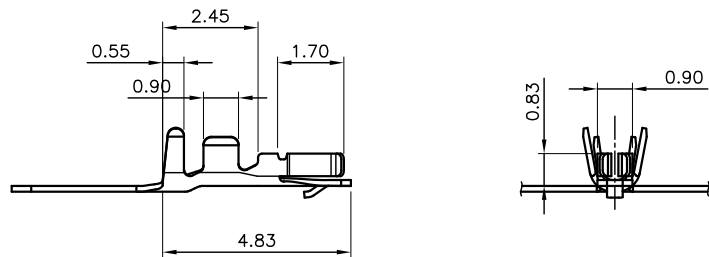
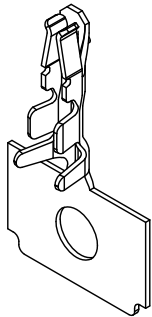
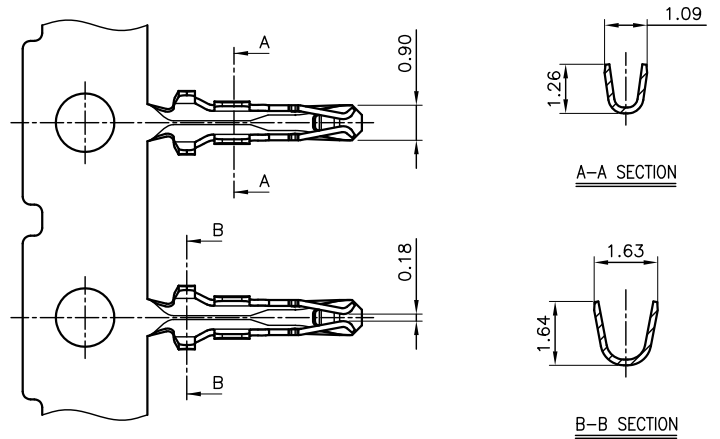


## 1502 Series

### ■ TERMINAL

• Part No.: 1502-G-P  
1502-T-T-S

- Material: Phosphor bronze
- Thickness: 0.15mm
- Plating: Gold plated, Tin plated
- Applicable Wire: AWG#24~26
- Insulation O.D: 0.85mm (Max)
- Q'TY : 15,000 pcs/ reel
- Accepts housing: 1502-H-xxP

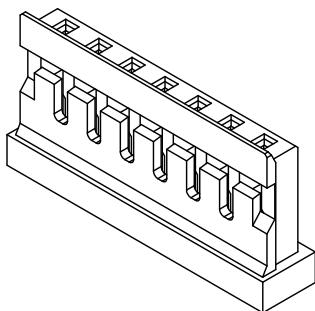
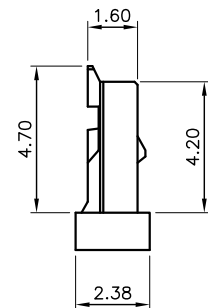
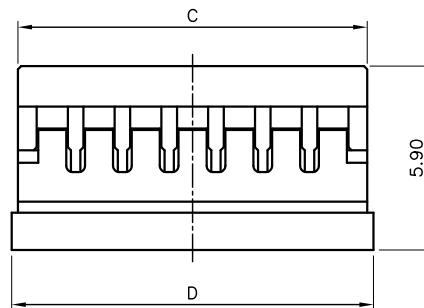
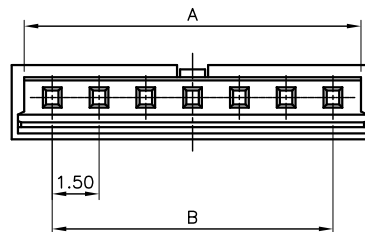


## 1502 Series

### ■ HOUSING

• Part No.: 1502-H-xxP

- Material: Nylon 66, UL 94V-0
- Pitch: 1.50mm (.059")
- Circuits: 2~9
- Q'TY : 1,000 pcs/ bag
- Accepts terminal: 1502-G-P  
1502-T-T-S



### Ordering Information and Dimensions

CIRCUITS	PART NO.	DIMENSION			
		A	B	C	D
2	1502-H-02P	3.30	1.50	3.70	4.10
6	1502-H-06P	9.30	7.50	9.70	10.10
7	1502-H-07P	10.80	9.00	11.20	11.60
9	1502-H-09P	13.80	12.00	14.20	14.60