

1.50mm .059" Center Wire to Board Connector

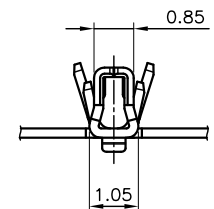
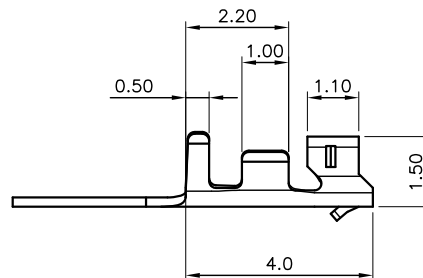
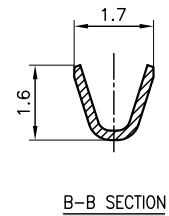
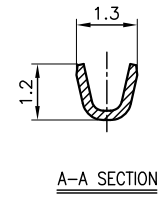
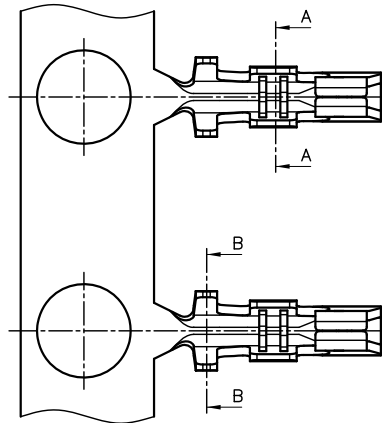
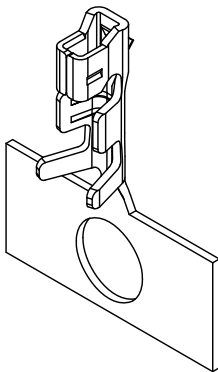


1500 Series

■ TERMINAL

• Part No.: 1500-G-P
1500-T-T-S

- Material: Phosphor bronze
- Thickness: 0.20mm
- Plating: Gold plated, Tin plated
- Applicable Wire: AWG#28~32
- Insulation O.D: 0.90mm (Max)
- Q'TY : 15,000 pcs/ reel
- Accepts housing: 1500-H-xxP

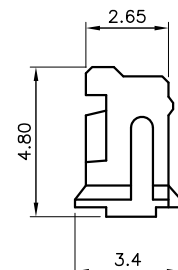
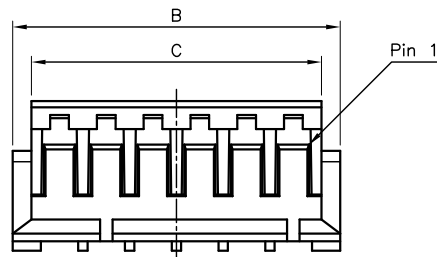
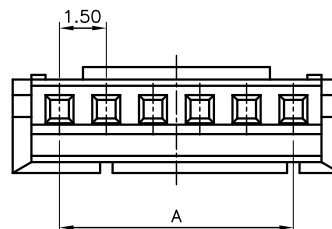
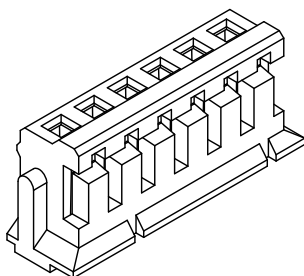


1500 Series

■ HOUSING

• Part No.: 1500-H-xxP

- Material: Nylon 66, UL 94V-0
- Pitch: 1.50mm (.059")
- Circuits: 2~13
- Q'TY : 1,000 pcs/ bag
- Accepts terminal: 1500-G-P
1500-T-T-S



Ordering Information and Dimensions

CIRCUITS	PART NO.	DIMENSION		
		A	B	C
2	1500-H-02P	1.50	4.50	3.30
3	1500-H-03P	3.00	6.00	4.80
4	1500-H-04P	4.50	7.50	6.30
5	1500-H-05P	6.00	9.00	7.80
6	1500-H-06P	7.50	10.50	9.30
7	1500-H-07P	9.00	12.00	10.80

CIRCUITS	PART NO.	DIMENSION		
		A	B	C
8	1500-H-08P	10.50	13.50	12.30
9	1500-H-09P	12.00	15.00	13.80
10	1500-H-10P	13.50	16.50	15.30
11	1500-H-11P	15.00	18.00	16.80
12	1500-H-12P	16.50	19.50	18.30
13	1500-H-13P	18.00	21.00	19.80