

1.25mm .049" Center Wire to Board Connector

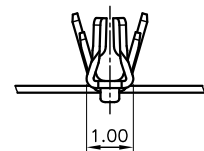
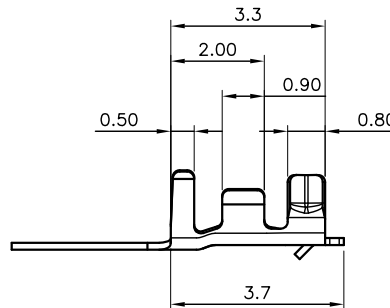
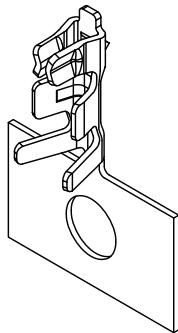
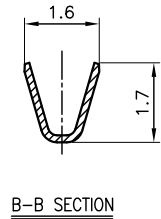
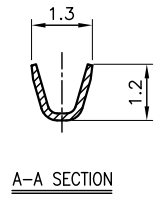
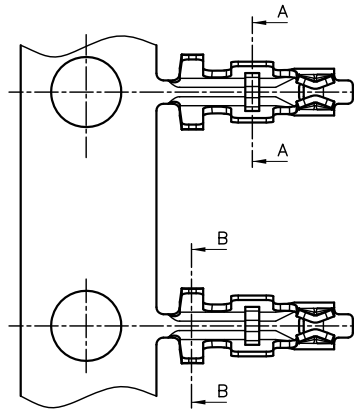


1255 Series

■ TERMINAL

• Part No.: 1255-G-P
1255-T-T-S

- Material: Phosphor Bronze
- Thickness: 0.15mm
- Plating: Gold plated, Tin plated
- Applicable Wire: AWG#28~32
- Insulation O.D: 0.90mm (Max)
- Q'TY : 10,000 pcs/ reel
- Accepts housing: 1255-H-xxP

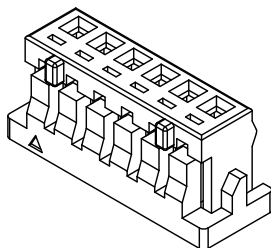
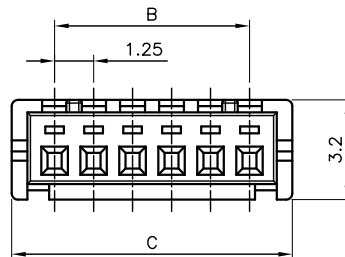
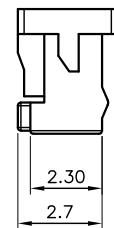
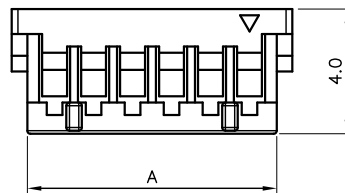


1255 Series

■ HOUSING

• Part No.: 1255-H-xxP

- Material: Nylon 66, UL 94V-0
- Pitch: 1.25mm (.049")
- Circuits: 2~15
- Q'TY : 1,000 pcs/ bag
- Accepts terminal: 1255-G-P
1255-T-T-S



Ordering Information and Dimensions

CIRCUITS	PART NO.	DIMENSION		
		A	B	C
2	1255-H-02P	3.00	1.25	4.00
3	1255-H-03P	4.25	2.50	5.25
4	1255-H-04P	5.50	3.75	6.50
5	1255-H-05P	6.75	5.00	7.75
6	1255-H-06P	8.00	6.25	9.00
7	1255-H-07P	9.25	7.50	10.25
8	1255-H-08P	10.50	8.75	11.50

CIRCUITS	PART NO.	DIMENSION		
		A	B	C
9	1255-H-09P	11.75	10.00	12.75
10	1255-H-10P	13.00	11.25	14.00
11	1255-H-11P	14.25	11.25	15.25
12	1255-H-12P	15.50	23.75	16.50
13	1255-H-13P	16.75	30.00	17.75
14	1255-H-14P	18.00	36.25	19.00
15	1255-H-15P	19.25	17.50	20.25

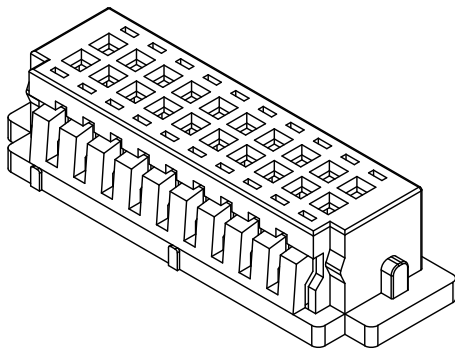
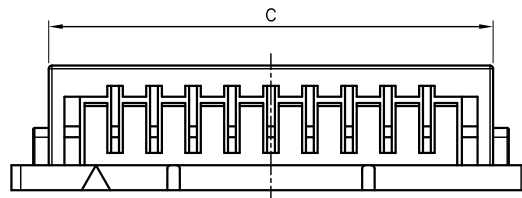
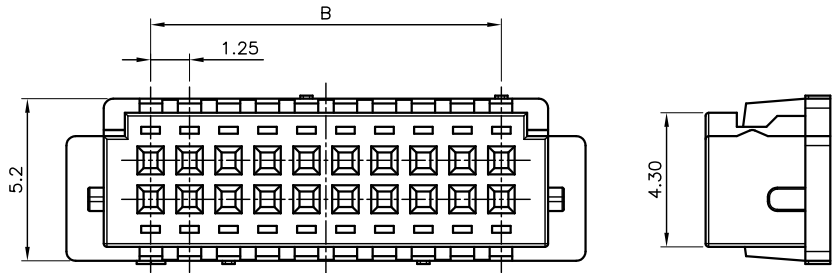
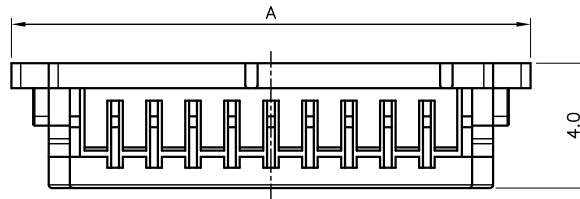
1.25mm .049" Center Wire to Board Connector



1255 Series

HOUSING

- Part No.: 1255-H-2×xxP
- Material: Nylon 66, UL 94V-0
- Pitch: 1.25mm (.049")
- Circuits: 10, 20, 30, 40
- Q'TY : 1,000 pcs/ bag
- Accepts terminal: 1255-G-P
1255-T-T-S
- Mate with: 1255-SMTS-2×xxP



Ordering Information and Dimensions

CIRCUITS	PART NO.	DIMENSION		
		A	B	C
10	1255-H-2×5P	10.40	5.00	8.00
20	1255-H-2×10P	16.65	11.25	14.25
30	1255-H-2×15P	22.90	17.50	20.50
40	1255-H-2×20P	29.15	23.75	26.75