

# 1.25mm .049" Center Wire to Board Connector



## 1251 Series

### ■ WAFER

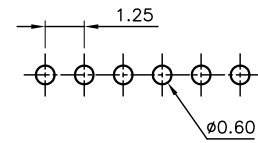
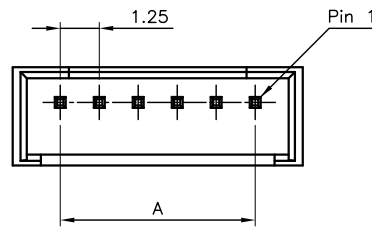
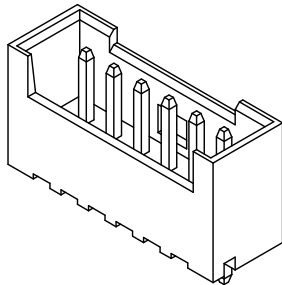
- Part No.: 1251-WS-xxP

### Specifications

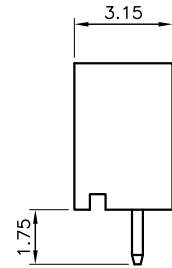
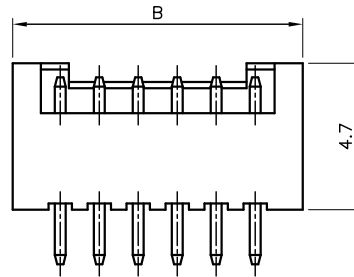
- Electrical
- Voltage Rating: 100V AC,DC
- Current Rating: 1A
- Withstanding Voltage: 800V AC/ minute
- Insulation Resistance: 1000MΩ Min
- Mates with: 1251-H-xxP

### Material

- Circuits: 2~15
- Housing: Nylon 66, UL 94V-0
- Pin: Brass, Tin plated
- Temperature Range: -25~+85°C



PCB PATTREN LAYOUT



### Ordering Information and Dimensions

CIRCUITS	PART NO.	DIMENSION	
		A	B
2	1251-WS-02P	1.25	4.30
3	1251-WS-03P	2.50	5.55
4	1251-WS-04P	3.75	6.80
5	1251-WS-05P	5.00	8.05
6	1251-WS-06P	6.25	9.30
7	1251-WS-07P	7.50	10.55
8	1251-WS-08P	8.75	11.80

CIRCUITS	PART NO.	DIMENSION	
		A	B
9	1251-WS-09P	10.00	13.05
10	1251-WS-10P	11.25	14.30
11	1251-WS-11P	12.50	15.55
12	1251-WS-12P	13.75	16.80
13	1251-WS-13P	15.00	18.05
14	1251-WS-14P	16.25	19.30
15	1251-WS-15P	17.50	20.55

## 1251 Series

### ■ WAFER

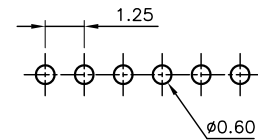
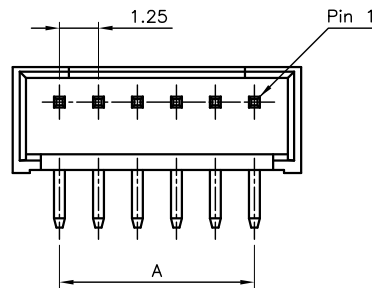
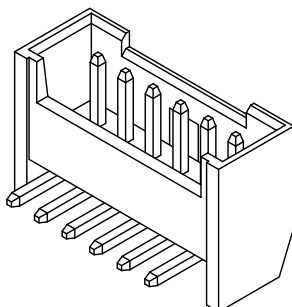
- Part No.: 1251-WR-xxP

### Specifications

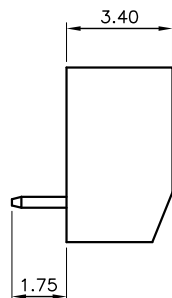
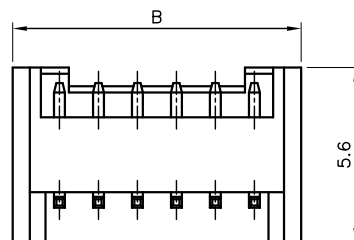
- Electrical
- Voltage Rating: 100V AC,DC
- Current Rating: 1A
- Withstanding Voltage: 800V AC/ minute
- Insulation Resistance: 1000MΩ Min
- Mates with: 1251-H-xxP

### Material

- Circuits: 2~15
- Housing: Nylon 66, UL 94V-0
- Pin: Brass, Tin plated
- Temperature Range: -25~+85°C



PCB PATTREN LAYOUT



### Ordering Information and Dimensions

CIRCUITS	PART NO.	DIMENSION	
		A	B
2	1251-WR-02P	1.25	4.25
3	1251-WR-03P	2.50	5.50
4	1251-WR-04P	3.75	6.75
5	1251-WR-05P	5.00	8.00
6	1251-WR-06P	6.25	9.25
7	1251-WR-07P	7.50	10.50
8	1251-WR-08P	8.75	11.75

CIRCUITS	PART NO.	DIMENSION	
		A	B
9	1251-WR-09P	10.00	13.00
10	1251-WR-10P	11.25	14.25
11	1251-WR-11P	12.50	15.50
12	1251-WR-12P	13.75	16.75
13	1251-WR-13P	15.00	18.00
14	1251-WR-14P	16.25	19.25
15	1251-WR-15P	17.50	20.50