

1.00mm .039" Center Wire to Board Connector



1072 Series

■ WAFER

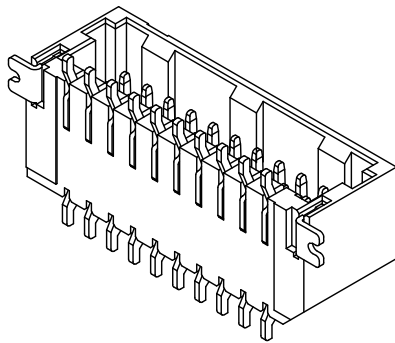
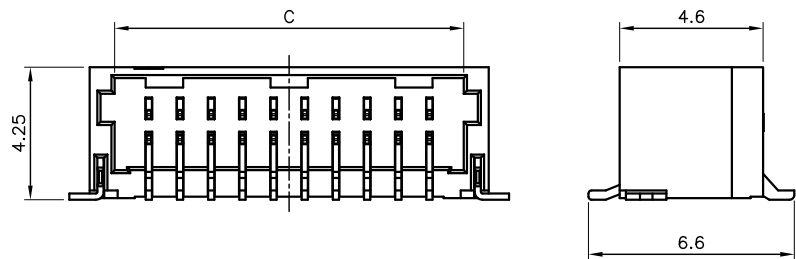
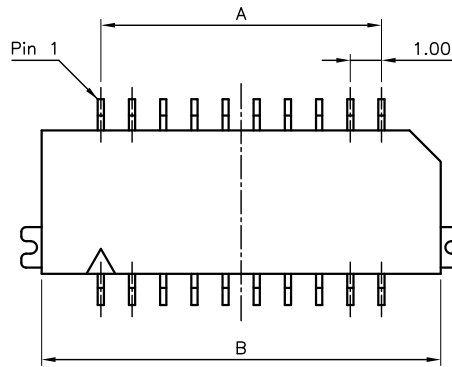
• Part No.: 1072-SMTR-2×xxP

Specifications

- Electrical
- Voltage Rating: 50V AC, DC
- Current Rating: 1A AC, DC
- Withstanding Voltage: 250V AC/ minute.
- Insulation Resistance: 100MΩ Min
- Contact Resistance: 20mΩ Max
- Mates with: 1072-H-2×xxP

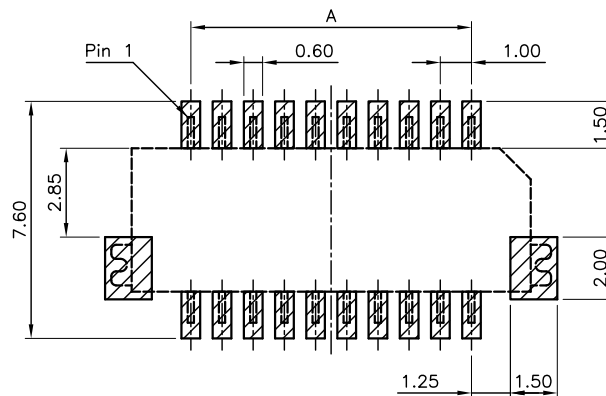
Material

- Circuits: 20, 22, 30, 40
- Housing: Thermal Plastic, UL 94V-0
- Terminal: Copper Alloy, Gold plated
- Fitting: Copper Alloy, Gold plated
- Temperature Range: -25~+65°C



Ordering Information and Dimensions

CIRCUITS	PART NO.	DIMENSION		
		A	B	C
20	1072-SMTR-2×10P	9.0	12.8	11.2
22	1072-SMTR-2×11P	10.0	13.8	12.2
30	1072-SMTR-2×15P	14.0	17.8	16.2
40	1072-SMTR-2×20P	19.0	22.8	21.2



PCB PATTREN LAYOUT