

1.25mm .049" Center Wire to Board Connector

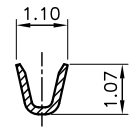
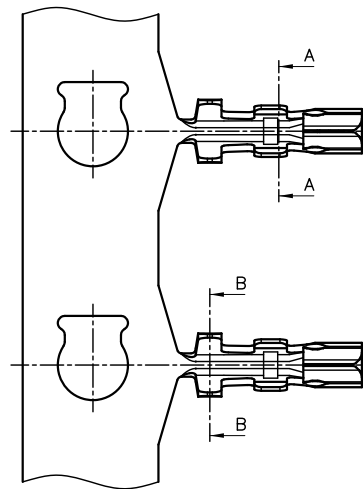
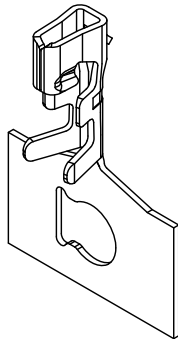


1027 Series

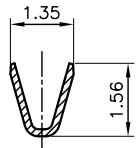
■ TERMINAL

• Part No.: 1027-G-P

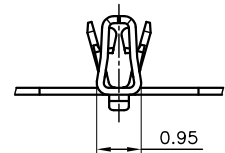
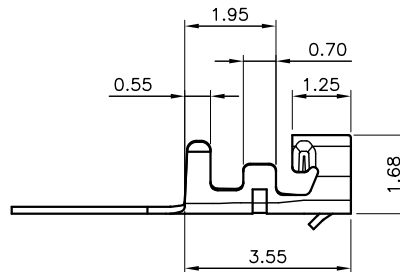
- Material: Phosphor Bronze
- Thickness: 0.15mm
- Plating: Gold plated
- Applicable Wire: AWG#28~32
- Insulation O.D: 0.90mm (Max)
- Q'TY : 10,000 pcs/ reel
- Accepts housing: 1027-H-xxP



A-A SECTION



B-B SECTION

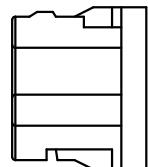
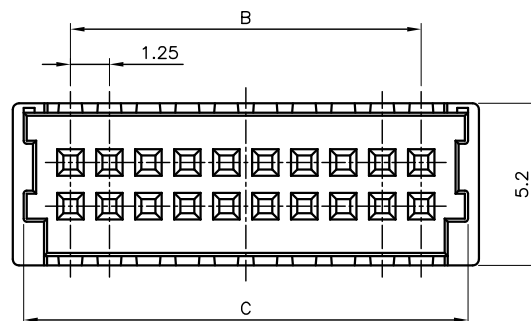
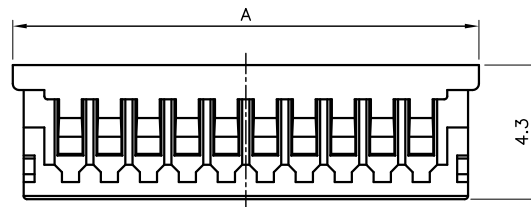
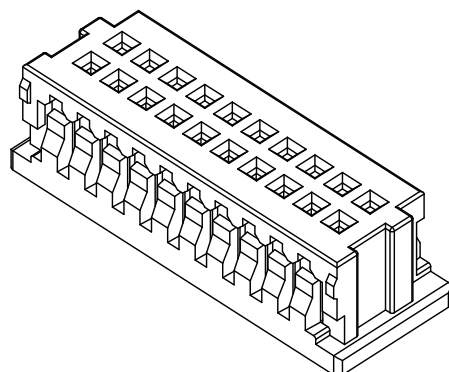


1027 Series

■ HOUSING

• Part No.: 1027-H-xxP

- Material: Nylon 66, UL 94V-0
- Pitch: 1.25mm (.049")
- Circuits: 20, 30, 40
- Q'TY : 1,000 pcs/ bag
- Accepts terminal: 1027-G-P



Ordering Information and Dimensions

CIRCUITS	PART NO.	DIMENSION		
		A	B	C
20	1027-H-2×10P	14.95	11.25	14.25
30	1027-H-2×15P	21.20	17.50	20.50
40	1027-H-2×20P	27.45	23.75	26.75