

1.25mm .049" Center Wire to Board Connector



1025 Series

■ WAFER

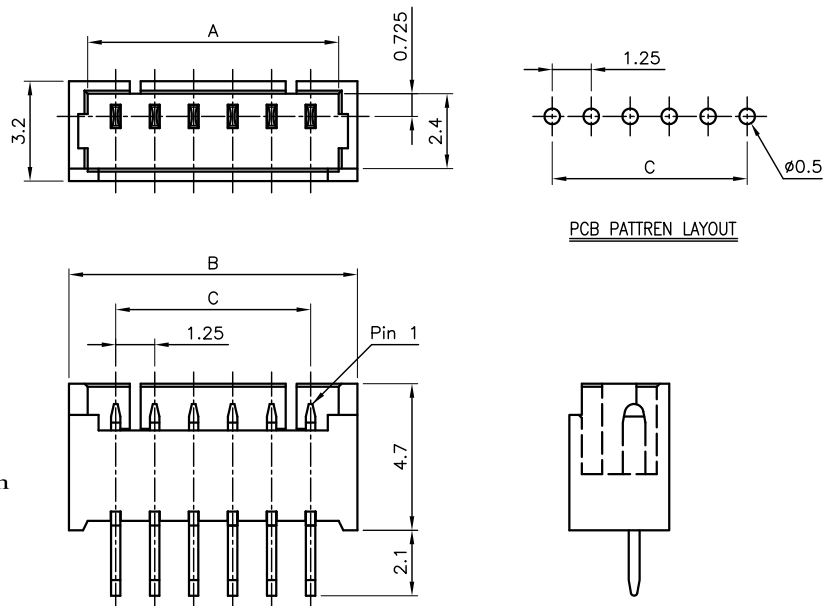
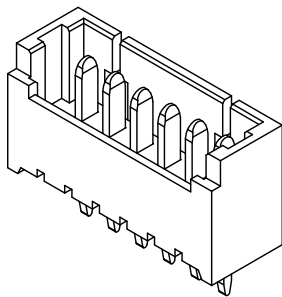
• Part No.: 1025-WS-xxP

Specifications

- Electrical
- Voltage Rating: 125V AC, DC
- Current Rating: 1A
- Withstanding Voltage: 250V AC/ minute.
- Insulation Resistance: 100MΩ Min
- Contact Resistance: 20mΩ Max
- Mates with: 1025-H-xxP

Material

- Circuits: 2~15
- Housing: Nylon 46, UL 94V-0
- Terminal: Brass, Tin plated
- Temperature Range: -25~+85°C
- Applicable P.C.B Thickness: 0.8mm



Ordering Information and Dimensions

CIRCUITS	PART NO.	DIMENSION		
		A	B	C
2	1025-WS-02P	3.05	4.25	1.25
3	1025-WS-03P	4.30	5.50	2.50
4	1025-WS-04P	5.55	6.75	3.75
5	1025-WS-05P	6.80	8.00	5.00
6	1025-WS-06P	8.05	9.25	6.25
7	1025-WS-07P	9.30	10.50	7.50
8	1025-WS-08P	10.55	11.75	8.75

CIRCUITS	PART NO.	DIMENSION		
		A	B	C
9	1025-WS-09P	11.80	13.00	10.00
10	1025-WS-10P	13.05	14.25	11.25
11	1025-WS-11P	14.30	15.50	12.50
12	1025-WS-12P	15.55	16.75	13.75
13	1025-WS-13P	16.80	18.00	15.00
14	1025-WS-14P	18.05	19.25	16.25
15	1025-WS-15P	19.30	20.50	17.50

1025 Series

■ WAFER

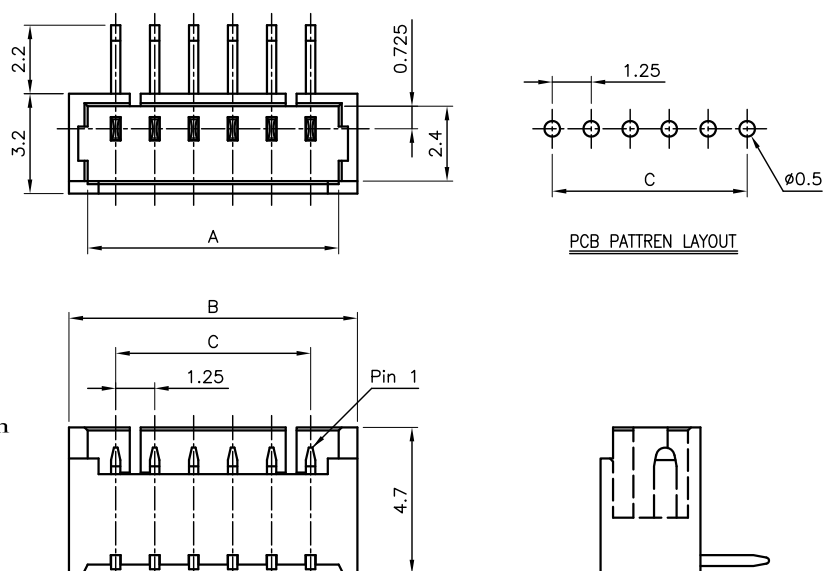
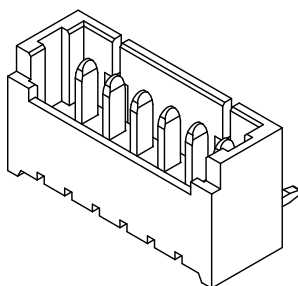
• Part No.: 1025-WR-xxP

Specifications

- Electrical
- Voltage Rating: 125V AC, DC
- Current Rating: 1A
- Withstanding Voltage: 250V AC/ minute.
- Insulation Resistance: 100MΩ Min
- Contact Resistance: 20mΩ Max
- Mates with: 1025-H-xxP

Material

- Circuits: 2~15
- Housing: Nylon 46, UL 94V-0
- Terminal: Brass, Tin plated
- Temperature Range: -25~+85°C
- Applicable P.C.B Thickness: 0.8mm



Ordering Information and Dimensions

CIRCUITS	PART NO.	DIMENSION		
		A	B	C
2	1025-WR-02P	3.05	4.25	1.25
3	1025-WR-03P	4.30	5.50	2.50
4	1025-WR-04P	5.55	6.75	3.75
5	1025-WR-05P	6.80	8.00	5.00
6	1025-WR-06P	8.05	9.25	6.25
7	1025-WR-07P	9.30	10.50	7.50
8	1025-WR-08P	10.55	11.75	8.75

CIRCUITS	PART NO.	DIMENSION		
		A	B	C
9	1025-WR-09P	11.80	13.00	10.00
10	1025-WR-10P	13.05	14.25	11.25
11	1025-WR-11P	14.30	15.50	12.50
12	1025-WR-12P	15.55	16.75	13.75
13	1025-WR-13P	16.80	18.00	15.00
14	1025-WR-14P	18.05	19.25	16.25
15	1025-WR-15P	19.30	20.50	17.50

1.25mm .049" Center Wire to Board Connector



1025 Series

■ WAFER

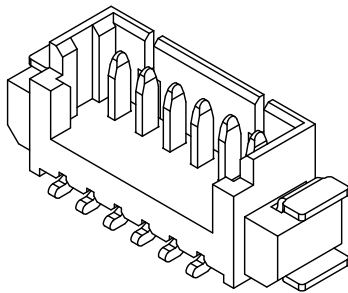
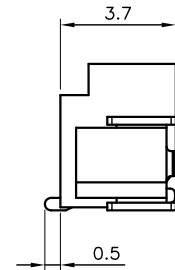
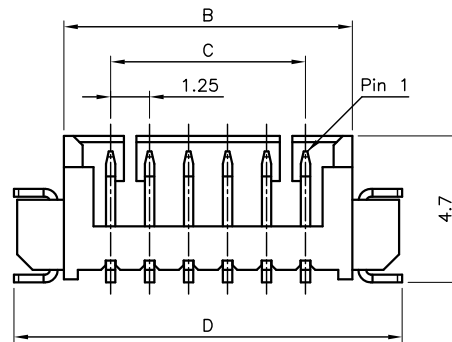
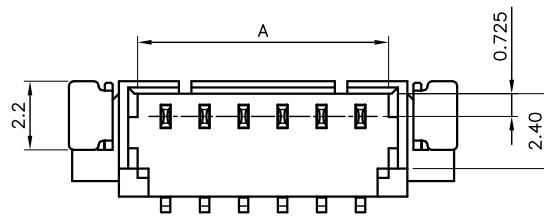
- Part No.: 1025-SMTS-xxP

Specifications

- Electrical
- Voltage Rating: 125V AC, DC
- Current Rating: 1A
- Withstanding Voltage: 250V AC/ minute.
- Insulation Resistance: 100MΩ Min
- Contact Resistance: 20mΩ Max
- Mates with: 1025-H-xxP

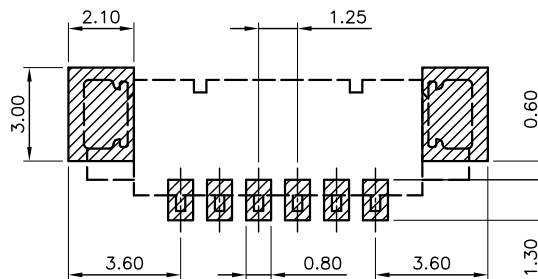
Material

- Circuits: 2~15
- Housing: Thermal Plastic, UL 94V-0
- Terminal: Copper Alloy, Tin plated
- Fitting: Copper Alloy, Tin plated
- Temperature Range: -25~+85°C

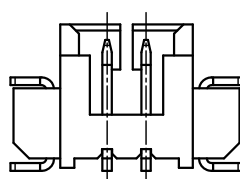


Ordering Information and Dimensions

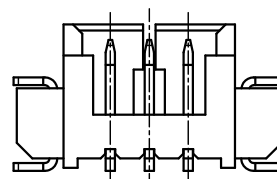
CIRCUITS	PART NO.	DIMENSION			
		A	B	C	D
2	1025-SMTS-02P	3.05	4.25	1.25	7.45
3	1025-SMTS-03P	4.30	5.50	2.50	8.70
4	1025-SMTS-04P	5.55	6.75	3.75	9.95
5	1025-SMTS-05P	6.80	8.00	5.00	11.20
6	1025-SMTS-06P	8.05	9.25	6.25	12.45
7	1025-SMTS-07P	9.30	10.50	7.50	13.70
8	1025-SMTS-08P	10.55	11.75	8.75	14.95
9	1025-SMTS-09P	11.80	13.00	10.00	16.20
10	1025-SMTS-10P	13.05	14.25	11.25	17.45
11	1025-SMTS-11P	14.30	15.50	12.50	18.70
12	1025-SMTS-12P	15.55	16.75	13.75	19.95
13	1025-SMTS-13P	16.80	18.00	15.00	21.20
14	1025-SMTS-14P	18.05	19.25	16.25	22.45
15	1025-SMTS-15P	19.30	20.50	17.50	23.70



PCB PATTREN LAYOUT



2 PIN



3 PIN

1.25mm .049" Center Wire to Board Connector



1025 Series

■ WAFER

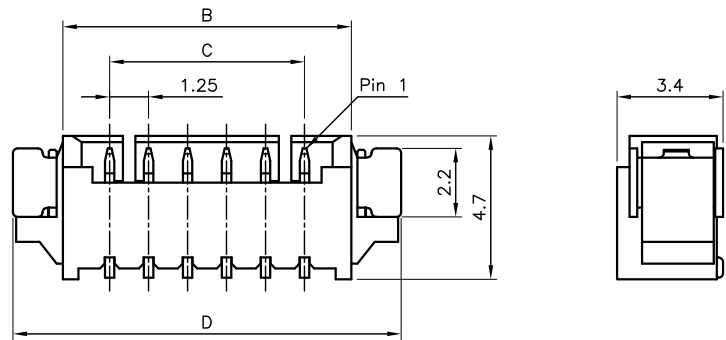
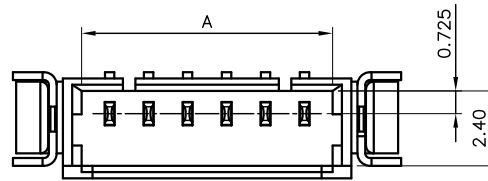
- Part No.: 1025-SMTR-xxP

Specifications

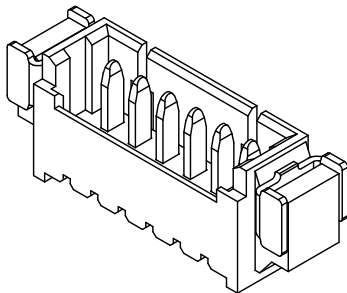
- Electrical
- Voltage Rating: 125V AC, DC
- Current Rating: 1A
- Withstanding Voltage: 250V AC/ minute.
- Insulation Resistance: 100MΩ Min
- Contact Resistance: 20mΩ Max
- Mates with: 1025-H-xxP

Material

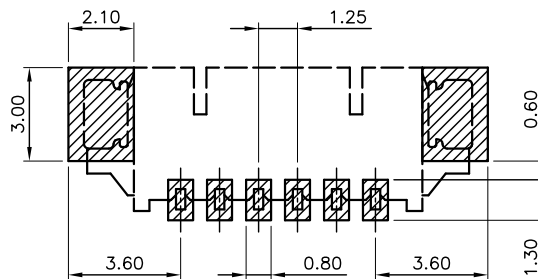
- Circuits: 2~15
- Housing: Thermal Plastic, UL 94V-0
- Terminal: Copper Alloy, Tin plated
- Fitting: Copper Alloy, Tin plated
- Temperature Range: -25~+85°C



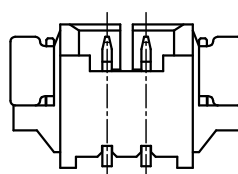
Ordering Information and Dimensions



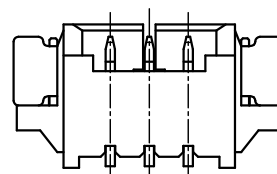
CIRCUITS	PART NO.	DIMENSION			
		A	B	C	D
2	1025-SMTR-02P	3.05	4.25	1.25	7.45
3	1025-SMTR-03P	4.30	5.50	2.50	8.70
4	1025-SMTR-04P	5.55	6.75	3.75	9.95
5	1025-SMTR-05P	6.80	8.00	5.00	11.20
6	1025-SMTR-06P	8.05	9.25	6.25	12.45
7	1025-SMTR-07P	9.30	10.50	7.50	13.70
8	1025-SMTR-08P	10.55	11.75	8.75	14.95
9	1025-SMTR-09P	11.80	13.00	10.00	16.20
10	1025-SMTR-10P	13.05	14.25	11.25	17.45
11	1025-SMTR-11P	14.30	15.50	12.50	18.70
12	1025-SMTR-12P	15.55	16.75	13.75	19.95
13	1025-SMTR-13P	16.80	18.00	15.00	21.20
14	1025-SMTR-14P	18.05	19.25	16.25	22.45
15	1025-SMTR-15P	19.30	20.50	17.50	23.70



PCB PATTREN LAYOUT



2 PIN



3 PIN