

# 1.00mm .039" Center Wire to Board Connector

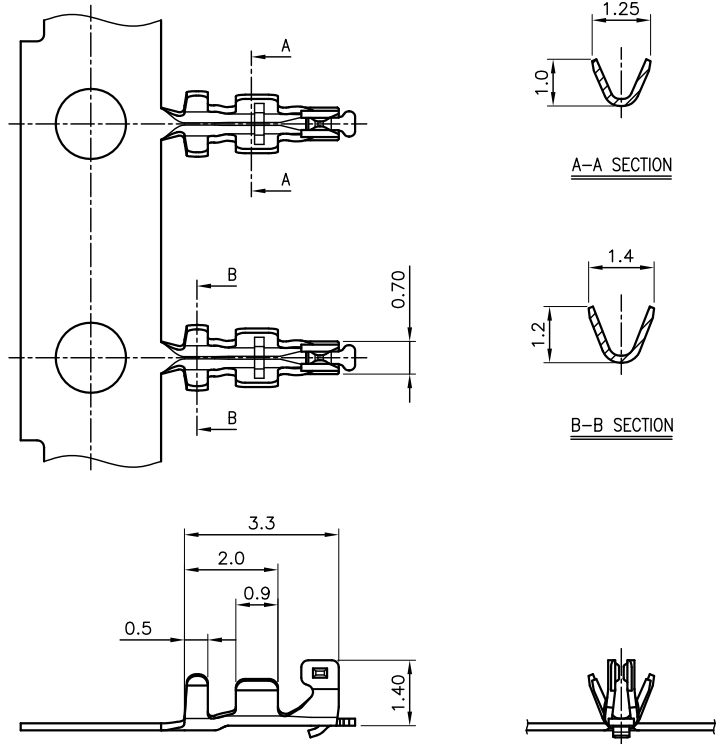
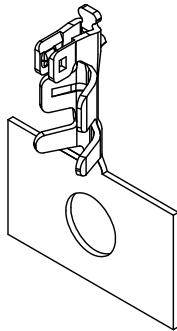


## 1020 Series

### ■ TERMINAL

Part No.: 1020-G-P  
1020-T-T-S

Material: Phosphor Bronze  
Thickness: 0.15mm  
Plating: Gold plated, Tin plated  
Applicable Wire: AWG#28~32  
Insulation O.D: 0.75mm (Max)  
Q'TY : 10,000 pcs/ reel  
Accepts housing: 1020-H-xxP

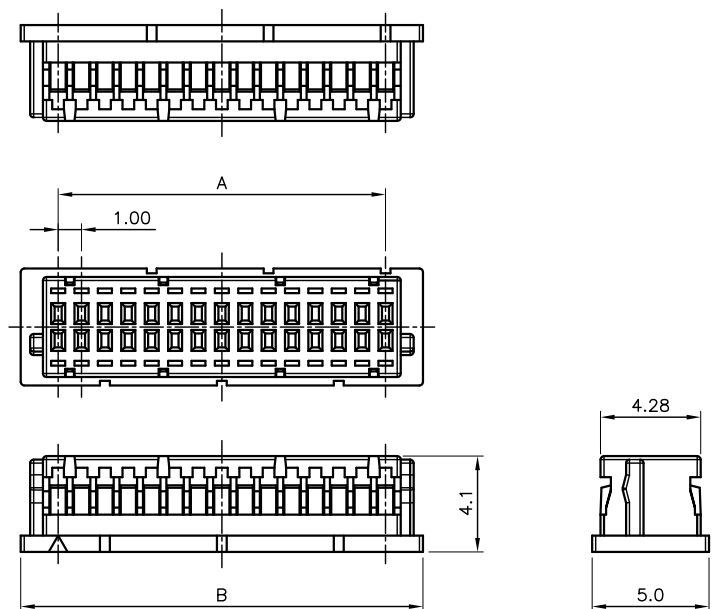
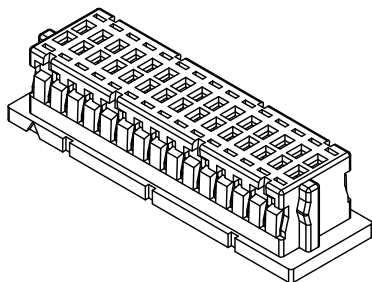


## 1020 Series

### ■ HOUSING

Part No.: 1020-H-2×xxP

Material: PBT, UL 94V-0  
Pitch: 1.00mm (.039")  
Circuits: 30, 40  
Q'TY : 1,000 pcs/ bag  
Accepts terminal: 1020-G-P  
1020-T-T-S  
Mate with: 1020-SMTR-xxP



### Ordering Information and Dimensions

CIRCUITS	PART NO.	DIMENSION	
		A	B
30	1020-H-2×15P	14.00	17.20
40	1020-H-2×20P	19.00	22.20